



**WE DO NOT BUILD  
HOUSEBOATS,  
WE CREATE  
YOU A HOME.**

*CRUISING HOME*





## WELCOME TO A NEW FREEDOM

Do you want to live, work and travel on the water? Then realize your dream of a „Custom Made Houseboat“ from CRUISING HOME, the specialist in sustainable and unique steel houseboats. We create lasting value. Unfortunately, plastics and lightweight construction dominate the market, but ultimately lead to higher maintenance costs and a great loss of value.

With a CRUISING HOME, you are purchasing a home that is built to be both, solid and sustainable. This means that future generations will still be able to enjoy your ship.

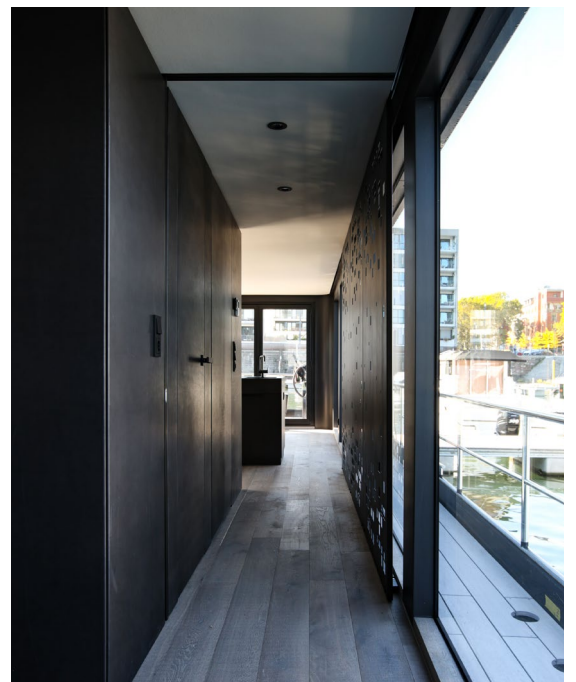




## THE CRUISING HOME - TRAVELLER CLASS

With a CH Traveller you will have residential, office and sailing vessel with the „look and feel“ of a floating penthouse. With large and mirrored windows you will enjoy an exclusive privacy. Come aboard and discover a space wonder!

You can also equip your CRUISING HOME with special systems that are otherwise only installed in the top price segment for luxury ships, such as the „DockSense Control Systems“ by Raymarine which combines object recognition with vessels propulsion system in order prevent collisions by creating a virtual fender in order to protect the boat.





## **SPACIOUS LIVING AREA ON TWO LEVELS AND PLENTY OF STORAGE SPACE**

With its spacious living area and full basement, the Traveller is ideally suited as a living or office ship. In the middle of the ship's hold you can set up a 25 sqm cabin with 2 large rectangular panoramic windows, which is accessible from the living area via a staircase - ideal as a reading room, lounge or children's room. You can easily reach the basement through a hatch with stairs. Underfloor heating ensure that everything stays dry here even on wet, cold winter days.

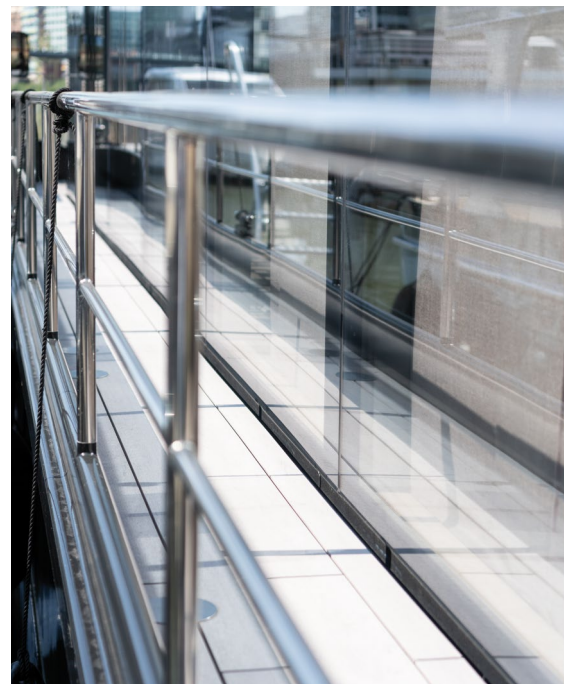




## YOUR HOME AND OFFICE ON THE WATER

With a CRUISING HOME you enjoy the same living comfort as at home, floor-to-ceiling double glazing, wood flooring with underfloor heating, a spacious fitted kitchen, fully equipped bathroom and custom-made bedroom with integrated bed and wardrobes are standard on board the CH Traveller. It is also possible to fully integrate the other furniture such as sofas and tables.

On request, we also build traveling offices, which you can operate tax-privileged. The 15 meter Traveller class offers space for up to 10 workstations equipped with Smarthome, WLAN, SAT TV and professional event technology.

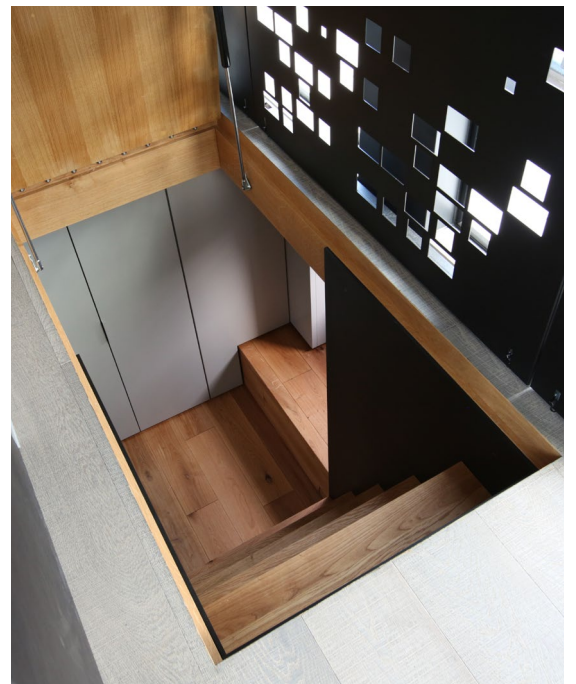




## **DISCOVERING THE WORLD ON BOARD YOUR SAILING PENTHOUSE**

Unique design, sublime detailing and well thought-out hull shape. The CH Traveller was designed by Olivier van Meer Naval Architects, the result of which is that the CH Traveller has become a “travelling penthouse” that is unrivalled.

With a Cruising Home you live, work and travel in style, comfortably and safely wherever you want. Whether you want to sail across Europe or live aboard, the CH Traveller makes it possible.

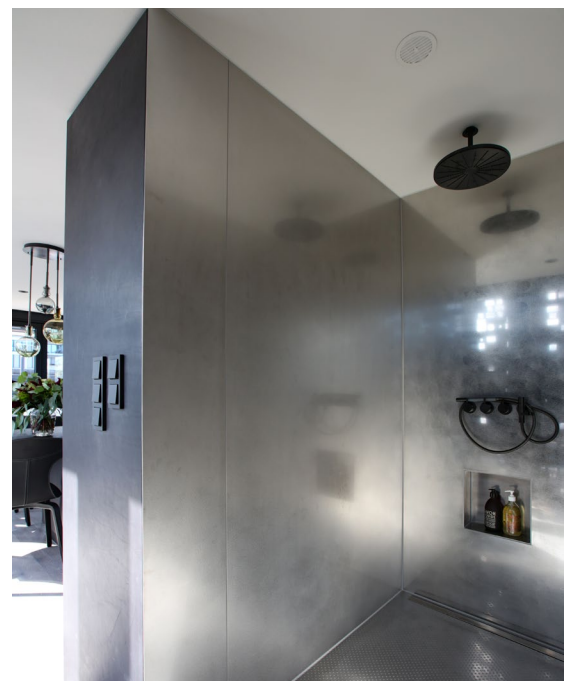




## SPACIOUS AND LOTS OF NATURAL LIGHT

The interior can be completely arranged as desired within the possibilities. The central staircase leads to the lower level where the spacious bedroom and bathroom(s) are located. Under the stairs, which can easily be hinged up with gas springs, you will find the entrance to the engine room.

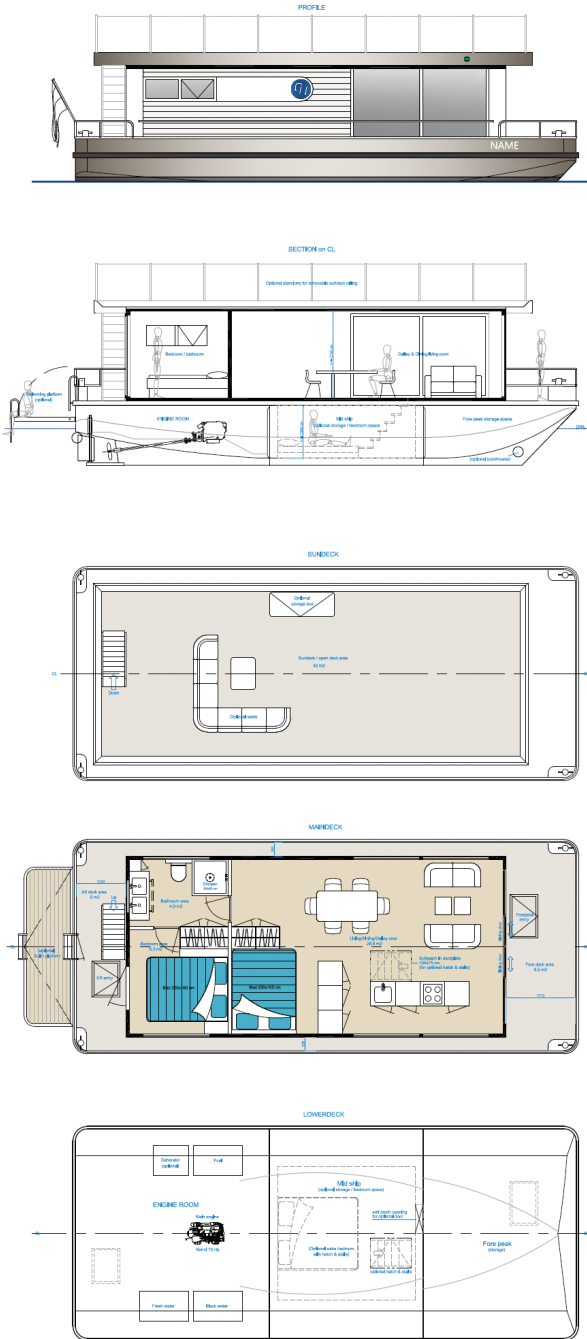
The different models, as well as further details and floor plans of our houseboats you will find under: [www.cruisinghome.eu/vessels](http://www.cruisinghome.eu/vessels)



# CRUISING HOME TRAVELLER CLASS OVERVIEW

The interior can be completely customized within the limits of possibilities.

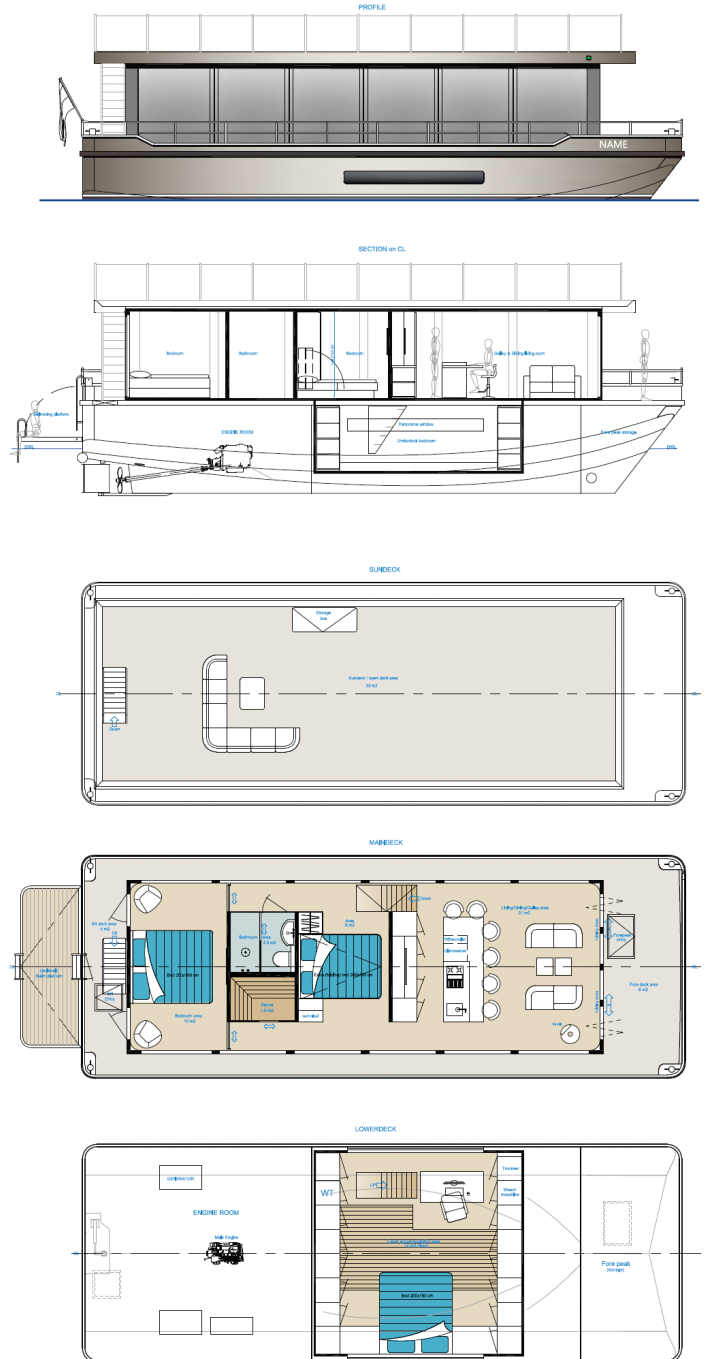
## TRAVELLER 1250



### Main Dimensions

Length over all: **12.50 m**  
 Beam over all: **5.30 m**  
 Draft: **0.90 m**  
 Airdraft (mast down): **3.20 m**  
 Living area (interior): **ca. 40 m<sup>2</sup>**  
 CE Category: **D**

## TRAVELLER 1500 'PANORAMA'



### Main Dimensions

Length over all: **14.95 m**  
 Beam over all: **5.52 m**  
 Draft: **1.20 m**  
 Airdraft (mast down): **4.60 m**  
 Living area (interior): **ca. 60 m<sup>2</sup>**  
 CE Category: **D**



## CRUISING HOME TRAVELLER – SPECIFICATIONS

TYPE	TRAVELLER 1250	TRAVELLER 1500
CONSTRUCTION	Steel hull & Superstructre	Steel hull & Superstructre
CE CATEGORY	D	D
LENGTH OVER ALL	12.50 m	14.95 m
BEAM OVER ALL	5.30 m	5.52 m
DRAFT	0.90 m	1.20 m
AIRDRAFT	3.20 m	4.60 m
BERTH	4 (6)	4 (6)
FRESHWATER	1000 L	1000 L
WASTEWATER	1000 L	1000 L
FUEL (DIESEL)	1000 L	1000 L
ENGINE	Nanni N4.140, 135 PS	Nanni N4.140, 135 PS
BOW THRUSTER	Quick 24V, 140 kgf	Quick 24V, 240 kgf
STEERING	Wheel	Wheel
PRICE (STARTING)	€ 480.000,- ex. VAT	€ 550.000,- ex. VAT
OPTIONS:		
STERN THRUSTER	Quick 24V, 140 kgf	Quick 24V, 240 kgf
NAVIGATION	Raymarine Pack: -Autopilot -Depth Sounder -AXIOM 9+ Chartplotter	Raymarine Pack: -Autopilot -Depth Sounder -AXIOM 9+ Chartplotter
MOORING ASSISTANT	Raymarine DockSense Alert or Control	Raymarine DockSense Alert or Control
STABILIZATION	DMS Magnus Master	DMS MagnusMaster
WASTE WATER	Enteron Cleaning System	Enteron Cleaning System
WATER	24V Watermaker	24V Watermaker
CLIMATE	Webasto Airconditioning	Webasto Airconditioning
ELECTRICITY	Solar Panels Lithium-Battery-Pack Generator 230V –12KW	Solar Panels Lithium-Battery-Pack Generator 230V –12KW



## STATE OF THE ART TECHNOLOGY

You have the choice between different motor manufacturers and drive strengths. We install exclusively professional marine and industrial technology. For further alternative drives alike hybrid or full electric, we will be happy to advise you on request. If you want to be completely autonomous and off-grid for a longer period of time, your CH Explorer can be equipped with:

- Solar panels,
- Lithium battery pack,
- Generator,
- Water maker,
- Biological waste water cleaning system



CRUISING HOME B.V.  
Koningsweg 27  
8861 KN, Harlingen NL  
Tel. +31 (0) 517 4175 23

Marco Brattinga  
Mob +31 (0) 6 463 485 26

[mb@cruisinghome.de](mailto:mb@cruisinghome.de)  
[www.cruisinghome.eu](http://www.cruisinghome.eu)

CRUISING HOME B.V.  
Am Handelshafen 30  
40221 Düsseldorf DE  
Tel. +49 (0) 211 394 369

Rolf Gast  
Mob +49 (0) 163 743 48 27

[rg@cruisinghome.de](mailto:rg@cruisinghome.de)  
[www.cruisinghome.de](http://www.cruisinghome.de)

Olivier van Meer Design B.V.  
Zuideruitweg 66  
1608 EX, Wijdenes NL

Olivier van Meer  
Tel. +31 (0) 6 533110 89

[info@oliviervanmeer.com](mailto:info@oliviervanmeer.com)  
[www.oliviervanmeer.com](http://www.oliviervanmeer.com)

*Olivier van Meer*  
®

**CRUISING HOME**



DESIGNERS | NAVAL ARCHITECTS | PROJECT MANAGEMENT